



31 Porcher Avenue, Pontypridd, CF37 3DB
£725 Per Calendar Month

**** Available for move in now ** Three bedrooms ** Semi detached ****
Available now

Viewing is advised on this property comprising of entrance hall, lounge, living room, kitchen, utility area, ground floor cloaks/wc, three bedrooms and first floor bathroom.

There is off road parking and rear garden together with double glazing and gas combi heating.
Convenient for local amenities, school and shop.

Entrance Hall

Lounge 10'6" x 10'2" (3.21 x 3.11)



Living Room 13'5" x 8'9" (4.10 x 2.68)



Kitchen 10'2" x 7'5" (3.11 x 2.28)



Utility Area

Cloaks/WC

First Floor Landing

Bedroom 1 13'3" x 10'7" (4.04 x 3.23)



Bedroom 2 12'6" x 8'10" (3.82 x 2.71)



Bedroom 3 8'6" x 7'10" (2.60 x 2.38)



Bathroom/WC

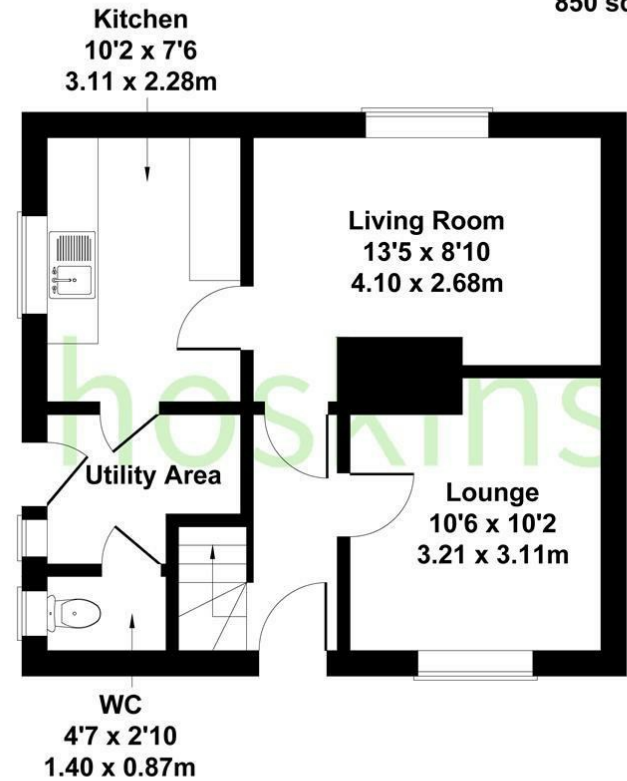


Outside

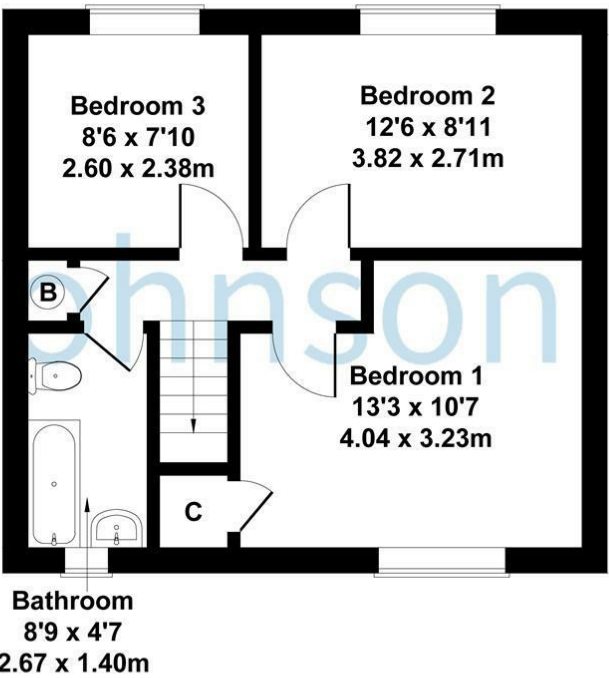


31 Porcher Avenue, Glyncoch

Approximate Gross Internal Area
850 sq ft - 79 sq m



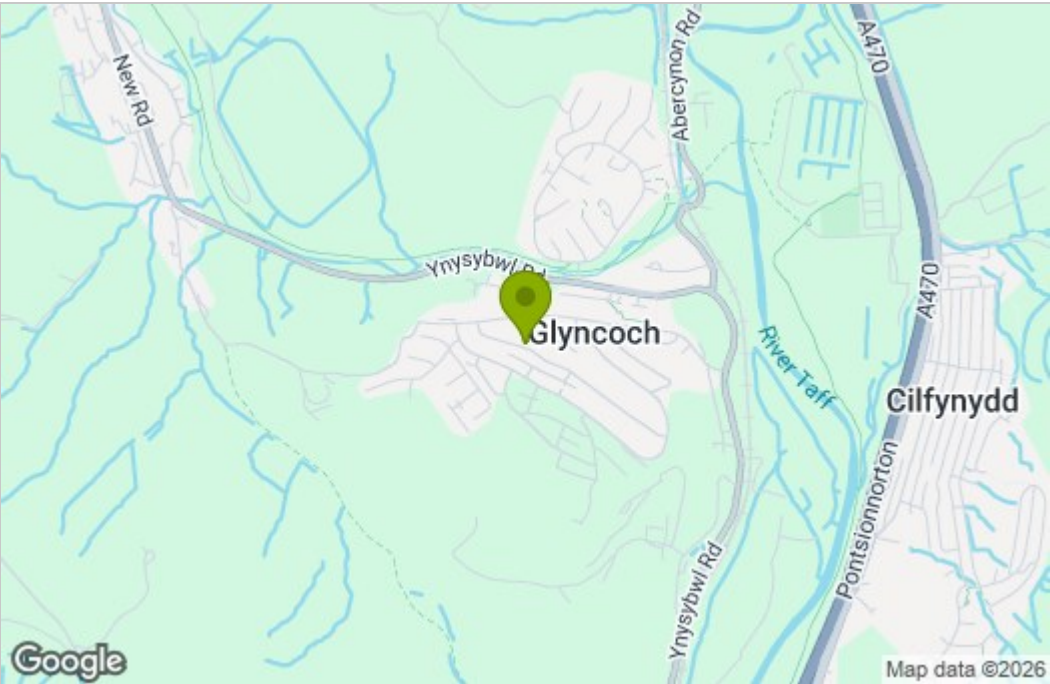
GROUND FLOOR



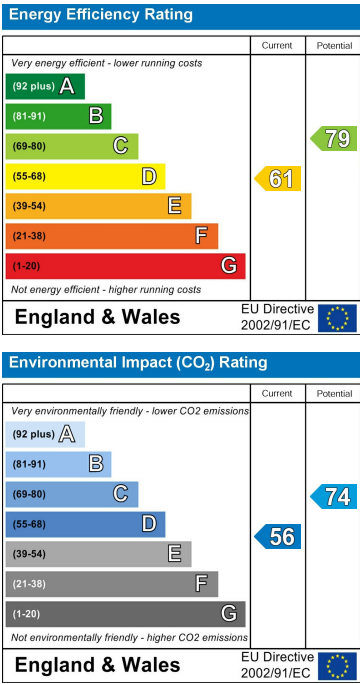
First FLOOR

Not to Scale. Produced by The Plan Portal 2022
For Illustrative Purposes Only.

Area Map



Energy Efficiency Graph



These particulars, whilst believed to be accurate are set out as a general outline only for guidance and do not constitute any part of an offer or contract. Intending purchasers should not rely on them as statements of representation of fact, but must satisfy themselves by inspection or otherwise as to their accuracy. No person in this firms employment has the authority to make or give any representation or warranty in respect of the property.